



Full Length Research Paper

# Epidemiology and Antibiotic Susceptibility Pattern of Methicillin-Resistant *Staphylococcus Aureus* Recovered from Tertiary Hospitals in Northeastern, Nigeria

<sup>1\*</sup>Okon, K.O, <sup>2</sup>Shittu AO, <sup>3</sup>Usman H, <sup>4</sup>Adamu, N, <sup>5</sup>Balogun S.T, <sup>6</sup>Adesina, O.O

<sup>1</sup>Department of Medical Microbiology, University of Maiduguri Teaching Hospital, Maiduguri.

<sup>2</sup>Department of Microbiology, Obafemi Awolowo University, Ile-Ife.

<sup>3</sup>Department of Obstetrics and Gynaecology, University of Maiduguri Teaching Hospital, Maiduguri.

<sup>4</sup>Adamu Nuhu, Department of Veterinary Public Health, University of Maiduguri, Maiduguri.

<sup>5</sup>Department of Clinical Pharmacology and Therapeutic, College of Medical Sciences, University of Maiduguri.

<sup>6</sup>Department of Medical Laboratory Sciences, College of Medical Sciences, University of Maiduguri.

\*Corresponding author e-mail: Okon\_kenneth@yahoo.com

## Abstract

Ninety-six consecutive, non-duplicate *S.aureus* isolates from clinical specimens were collected between January through December 2007, from six tertiary hospitals in northeastern Nigeria and analysed by phenotypic and molecular methods. Of the 96 *S.aureus* isolates, 12 (12.5%) MRSA isolates were identified by disc diffusion and confirmed by PCR assay. Twelve MRSA and 4MSSA isolates exhibited multiresistant pattern to the commonly used antibiotics, 3 of the 12 MRSA were sensitive to clindamycin while all the *S.aureus* (MRSA and MSSA) isolates were susceptible to vancomycin, mupirocin and fusidic acid. Overall antibiotic susceptibility pattern, penicillin (92.1%), gentamicin (14.6%), erythromycin (15.6%), cotrimoxazole (19.8%), ciprofloxacin(15.6), clindamycin(9.4%) and rifampicin (2.1%). The SCCmec typing of the MRSA isolates by two standard typing methods revealed presence of uncharacterised SCCmec element. The MRSA prevalence of 12.5 percent may be considered to be high in an environment without previous surveillance studies. The multiresistant pattern of the pathogens to frontline antibiotics posed serious public health problem, because of cost and unavailability of alternate chemotherapeutic option like vancomycin. The non-definition of SCCmec types affirmed divergent element of staphylococcal flora.

**Keywords;** Antibiotic susceptibility pattern, *S.aureus*, Northeastern Nigeria.

## INTRODUCTION

*Staphylococcus aureus*, a versatile human pathogens responsible for nosocomial and community-associated infections is associated with high morbidity and mortality rate. However, emerging reports revealed that increase rate of hospital-acquired infections, are mostly due to antibiotic-resistant pathogens (Kleven, 2007). Of the resistant pathogens that had attracted public health interest worldwide is methicillin-resistant *S.aureus* (MRSA). It is major cause of nosocomial infection and colonization, resulting in morbidity and mortality. Consequential effect of MRSA infection had resulted in, prolonged hospitalization, increased in medical expenses, and difficulty in patient treatment and management. In US hospitals, MRSA accounts for most

of invasive *S.aureus* infections, with high fatality rate (Kleven 2007). The financial burden of hospital-acquired infection due to MRSA is higher, in term of treatment that could cost approximately (\$25,000) compared to non-MRSA hospital-acquired infection of \$13,973 (Kleven 2007).

The unique characteristic of MRSA strains is the multidrug resistance pattern to  $\beta$ -lactam and other classes, due to acquisition of *mecA* gene, key genetic determinant located on the staphylococcal cassette chromosome (SCCmec) (Hiramatsu *et al.*, 2001, Ito *et al* 2001). The *mecA* gene, encodes the PBP2a a inducible 75kb PBP responsible for low-affinity to  $\beta$ -lactam and other drugs (Enright *et al.*, 2003, Lowy 1998). Six

SCCmec type have been described, SCCmec I-VI which is used in defined MRSA strain source, as SCCmec type I-III are known to be of nosocomial origin, while SCCmec type IV of community origin (Ma *et al.*, 2000).

MRSA prevalence varies greatly with geographical location, type of hospital and studied population. High prevalence have been recorded in tertiary hospitals in US, southern European countries, Asia and South America (Dikema *et al.*, 2001). In Africa, MRSA prevalence varies with different countries, high in some and low in others (Bell and Turridge, 2002). Despite this epidemiological data on MRSA in some African countries, available data are still relatively limited when compared to information from developed countries, which may be attributable to high level of awareness of MRSA infections and its clinical and societal consequences. Although in Nigeria, few studies on phenotypic and molecular characterization of *S.aureus* have been conducted, particularly in southwestern zone (Adesida *et al.*, 2005, Shittu *et al.*, 2005, Grehdemedin *et al.*, 2009). To the knowledge of the authors, no similar work have been carried in this geographical zone, that may highlight the epidemiological characteristic pattern of MRSA isolates. The peculiarity of the study area boarded by three republics involved massive movement of peoples and animals witnessed in interboard trading, unregulated sales of antimicrobials agents, all these are known predisposing factors for emergence of resistant strains. Epidemiological knowledge of MRSA in the geographical zone will provides valuable information, particularly on antibiotic usage and infection control strategy for within the hospital environment. We examined the epidemiological characteristic of MRSA isolates isolated from clinical specimens in northeastern Nigeria.

## MATERIAL AND METHODS

The study area comprises of six administrative states, of Borno, Adamawa, Bauchi, Gombe, Jalingo and Yobe, with a tertiary hospital located in each state. The tertiary hospitals used in the recovery of *S.aureus* isolates are multidisciplinary and varies in beds size capacity. The University of Maiduguri Teaching Hospital, is a major referred centre with bed size capacity of 500, while other tertiary hospital bed size ranged between 100-250. The 96 consecutive non-duplicate *S.aureus* isolates were confirmed by both tube coagulase and DNase test. Demographic information collected includes, age, sex and type of clinical specimens. For this study, bacterial isolates were classified as inpatient recovered from clinical specimens of patient on admission, while outpatient were those seen at the general outpatient clinic.

Antibiotic susceptibility testing was determined by disc-diffusion method in accordance to CSLI guideline,

using the following antibiotic discs, pencillin (10IU), oxacillin (1µg), cefoxitin (30µg), gentamycin (10µg), erythromycin (15µg), clindamycin (2µg), ciprofloxacin (5µg), cotrimoxazole (25µg), rifampicin (30µg) vancomycin (30µg), fusidic acid (10µg), and mupirocin (5µg). The determination of sensitive, immediate or resistant isolates depend on the zone of growth inhibition diameter of CSLI breakpoint. *Staphylococcus aureus* ATCC25932, standard strain was included in each batch analysis as control strain. Methicillin resistance expression was determined by disc diffusion method using both oxacillin and cefoxitin discs. The D-test for inducible and constitutive phenotype was determined according to method described by Freibekorn *et al.* (2003), in which the erythromycin and clindamycin discs are placed at 12-14mm apart. Beta-lactamase production was determined by the iodometric method as described by Odugbemi *et al.* (1977). Urease production was determined by inoculation of *S.aureus* isolates on Christensen urea slant, and incubated at 37°C for 24 hours. A urease-positive result is indicated by change of colour from orange to pink.

The SCCmec typing of MRSA isolates was performed as described by Kondo *et al.* 2007, using two multiplex PCR assay. The first PCR(M-PCR-1) identifies the presence of *mecA* gene as well as the *ccr* types and the PCR(M-PCR-2) identifies the *mec* class. The combination of both *ccr* type and *mec* class determines the SCCmec type. In confirmation of our results with Kondo *et al.*, 2007 PCR assay. The MRSA isolates were further analysed with PCR assay method described by Oliveria *et al.* (2007). SCCmec type controls (i.e. I to VI) were included in each test run. Chromosomal DNA extraction method was as described by Ito *et al.* (2003), using lysostaphin. The PCR conditions for both methods was as follows, initial denaturation step at 94°C for 2 minutes, denaturation step at 94°C for 2minutes, annealing at 57°C for 1minute 30seconds, extension at 72°C for 2 minutes and final elongation step at 72°C for 2minutes at the end for a total of 30cycles. The PCR-product was removed from the thermocycler at the end of the process, resolved and visualized in 1.5% agarose. The primers sequences of both PCR assay is presented in table 1 and 2 respectively.

## RESULT

Of the 96 *S.aureus* isolates, 38.5%(n=37) were recovered from wounds specimens, 19.8%(n=19)HVS/ endocervical swab, 17.7% (n=17)urine, 9.4%(n=9)ear, 4.2%(n=4)pus, urethral 3.1%(n=3)each from urethral and eye swab, 2.1%(n=2) semen, and 1.0%(n=1)from sputum and blood culture respectively. Seventy-three percent(n=71) of the *S.aureus* isolates were recovered from UMTH(n=71) and the remaining 26%(n=25) from the five tertiary hospitals. The mean age of the patients was 27.7(+15.5,

**Table 1.** Frequency of resistance of *S. aureus* (MRSA and MSSA) strains to common antibiotics

	Antibiotics											
	P	OX	FOX	GM	E	CC	SXT	CIP	RA	VA	FA	MUP
MSSA	91.6	0.0	0.0	2.4	3.6	0.0	8.3	3.6	2.4	0.0	0.0	0.0
MRSA	100.0	100.0	100.0	100.0	100.0	75.0	100.0	100.0	0.0	0.0	0.0	0.0
Total	92.7	12.5	12.5	14.6	15.6	9.4	19.8	15.6	2.1	0.0	0.0	0.0

<sup>a</sup> P = penicillin, OX = oxacillin, FOX = cefoxitin, GM = gentamycin, E = erythromycin, CC = clindamycin, SXT = co-trimoxazole, CIP = ciprofloxacin, RA = rifampicin, VA = vancomycin, FA = fusidic acid, MUP = mupirocin.

**Table 2.** Antibiotic resistance of *S.aureus* isolates based on patient classification

Antibiotic	Inpatient			Outpatient			p value
	S	R	Resistance(%)	S	R	Resistance(%)	
Penicillin	2	35	94.6	5	54	91.5	.448
Gentamicin	29	8	21.6	51	8	13.6	.307
Erythromycin	27	10	27.0	50	9	15.3	.162
Clindamycin	32	5	13.5	53	6	10.2	.621
Co-trimoxazole	28	9	24.3	48	11	18.6	.338
Ciprofloxacin	26	11	29.7	46	13	22.0	.271
Rifampicin	37		56		3	5.1	.228
Vancomycin	37		59				
Fusidic acid	37		59				
Mupirocin	37		59				

CI 1-80) years, with even gender distribution (male and female) of 48 (50%). Thirty-seven *S.aureus* isolates were from inpatient and 59 from outpatients. Eighty (83.3%) were scored positive for urease production and 65 (67.7%) for beta-lactamase production. Overall antibiotic susceptibility pattern of *S.aureus* isolates (Table 1) penicillin (92%), gentamicin (14.6%), erythromycin (15.6%), cotrimoxazole (19.8%), ciprofloxacin (15.6%) clindamycin (9.4%) and rifampicin (2.1%). All the isolates were susceptible vancomycin, fusidic acid and mupirocin. Beta-lactamase production showed similar pattern with susceptibility pattern. Comparison of antibiotic susceptibility between *S.aureus* isolates from inpatient and outpatient showed slight difference (Table 2).

Twelve putative MRSA isolates identified by cefoxitin disc diffusion test were further confirmed by PCR assay for detection of *mecA* gene, in contrast to 6 putative MRSA detected by oxacillin showed discordant result with PCR assay. Of the 12 MRSA isolates identified, 9 recovered from wounds specimens, 2 from high vaginal/endocervical swabs and 1 from eye swab. In addition, 11 MRSA were recovered from UMTS and 1 from Gombe. Of the 12 MRSA isolates, 8 were positive for urease production and recovered from outpatient. The 12 MRSA isolates and 4 MSSA isolates exhibited multiresistant pattern, with 57(59.4%) MSSA isolates were resistant to only penicillin and 4(4.8%) susceptible to penicillin. Of the 12 MRSA strains identified, 3 were

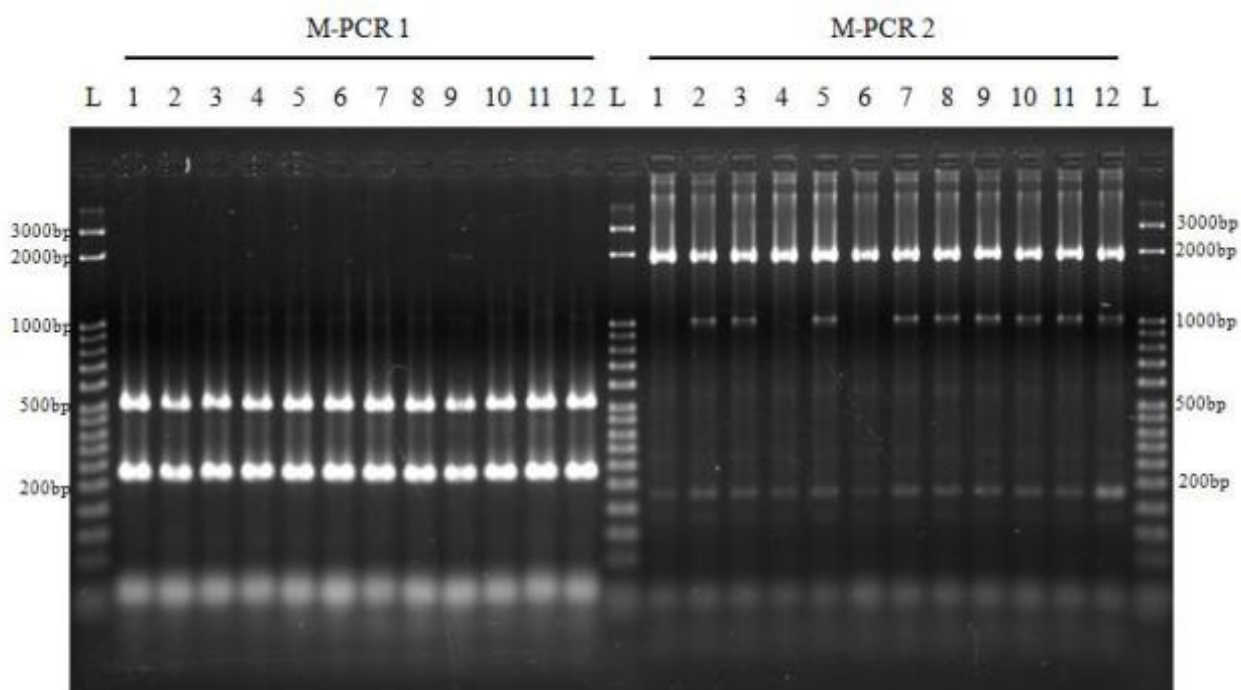
clindamycin-susceptible and one demonstrated the inducible phenotype.

The SCCmectyping of the 12 MRSA isolates in figure 1 and 2, depicting uncharacterized SCCmec element. Interestingly, three MSSA isolates amplified the SCCmec without the presence of *mecA* gene. Using the MPCR-5 of Kondo method, the MRSA isolates amplified only cadmium gene.

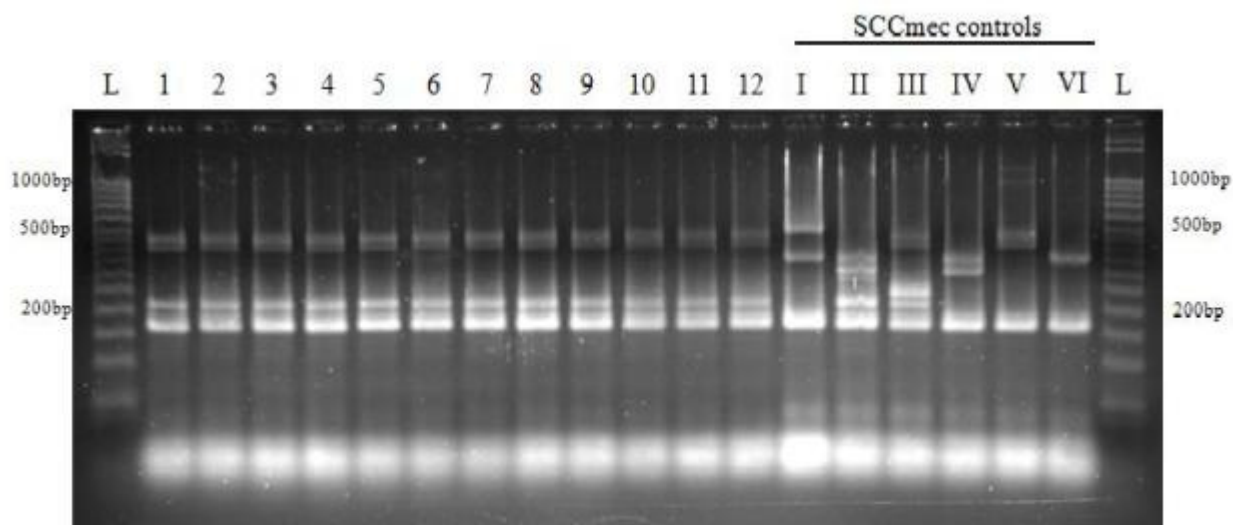
## DISCUSSION

Paucity of epidemiological data on MRSA strains in most sub-Saharan African countries, cast shadow on the public health implication and awareness of the organism. Epidemiological information from this study intends to provides the baseline data, for eventual appreciation on the need for cautious approach and intervention measures.

In this study, the MRSA prevalence of 12.5% may be considered to be high, reason being that there has not been any previous epidemiological data on MRSA in geographical zone. Although, MRSA prevalence are known to vary with geographical location, type of health institution, studied population and method of detection employed. However, our MRSA prevalence may be considered moderate, when compared with similar study in Ibadan, Southwestern Nigeria with a prevalence level of 20.3% (Grehenedhem et al., 2009) as both



**Figure 1.** Figure 6:M-PCR 1 and M-PCR 2(Kondo method), detection of *mecA* , *ccr* and *SCCmec* gene respectively. Lane 1-12 are the MRSA strain, 1-11 from UMT, 12-Gombe,the Ladder, is 50bp scale.*mecA* and *ccr* gene amplified at 209bp, 518 bp, and *SCCmec* at 1798 bp.



**Figure 2.** Multiplex PCR assay(Oliveria method).shows the 12 MRSA strains and *SCCmec* types(I-VI).The *mecA* gene amplified at 162 bp, *SCCmec* at 243bp and *ccr* at 449bp.The *SCCmec* differ in number of amplified PCR products band, type I, 3bands, II 4, III 4bands, VI 3 bands, V 2 bands and VI 2 bands.

phenotypic and molecular methods were employed. Previous studies on MRSA in the southwestern Nigeria with same detection methods, had reported prevalence of less than 2% (Shittu et al., 2005, Adesida et al., 2005).

Oxacillin disc diffusion method was the earliest method of detection for methicillin resistance expression.

Because of low specificity and sensitivity, cefoxitin disc diffusion was introduced by CSLI, that is known as a good surrogate marker of *mecA* gene detection (Simor et al., 2001, Becker et al., 2002). Most earlier MRSA prevalence reported from Nigeria were based on phenotypic methods using oxacillin disc diffusion method

had reported high prevalence level. Studies conducted in eight African and Malta hospital reported prevalence ranged between 20-30% (Kesah et al. (2003), in southwestern Nigeria 9-50% (Rotimi et al., Ako-Nai et al.) and in north central Nigeria of 34%(Taiwo et al., 2006). The disc diffusion method is known to be influenced by both extrinsic and intrinsic factors which includes temperature, pH, size of inoculums, concentration of sodium chloride and cell population (Hartman and Tomasz 1997). In this study, six putative MRSA isolates with oxacillin was misidentified with PCR assay in contrast to cefoxitin test that compared favourably with PCR assay, this finding simply affirmed the cefoxitin as good marker (Skov et al., 2003).

Antibiotic susceptibility pattern of *S.aureus* isolates showed that 12 MRSA and 4 MSSA isolates exhibited multiresistant pattern to the commonly prescribed and administered frontline antibiotics in the tertiary hospital in the study area. This pattern, therefore signals a public health problem as these agent are relatively affordable and readily available for administration in both hospital and community setting. The high-level resistance pattern observed with penicillin, is consistent with other studies elsewhere (Ontego et al., 2004, Kesah et al., 1998, Rotimi et al., 1995). Of interest is varied resistance pattern observed with ciprofloxacin, gentamicin, erythromycin, cotrimoxazole, and rifampicin among MSSA strains. This pattern underscores the need by physician to be prudent and cautious in their prescription, while such pattern is maintained or further stemmed down against possible emergence of resistance strains. Although, other studies have reported resistance with ciprofloxacin of *S.aureus* isolates recovered from hospital and community setting (Acar and Goldstein 1997). In this study, cotrimoxazole resistance level was low, compared to high -level resistance reported in studies conducted in southwestern Nigeria (Kesah et al 2003, Shittu et al 2005). The reason for such pattern in our study is unclear as unrestricted usage and administration of cotrimoxazole for variety of diseases conditions, is a common in our locality. The susceptibility pattern exhibited by rifampicin in this study, simply revealed the use of this agent primarily in the treatment of *Mycobacterium tuberculosis* infection. Significant proportion of *S.aureus* isolates(9 MRSA) were recovered wounds specimens, similar to other reported studies (Akpaka et al., 2007, Orretta and Land 2006), Shittu and Lin, 2006).

MRSA isolates are commonly associated with nosocomial infection, with high isolation rate recorded in tertiary hospitals. In this study, 11 of the 12 MRSA isolates were recovered from UMTH (>500 beds), a major tertiary hospital and also doubles as major referred centre to other hospital and the remaining one from hospital with less than 250 beds is approximately 400km apart, this finding is consistent with reports of other investigators (Panlilo et al., 1992, Schmitz et al.,

1997). In US, high incidence of MRSA (7.8%) was reported in a 1500 beds capacity hospital compared to low incidence of 0.5% in small hospital (200beds) (Schmitz et al., 1997).

Staphylococcal cassette chromosome *SCCmec* typing, is used as epidemiological marker of isolates into either of nosocomial or community-associated infections (Ma et al., 2000). Based on the results of the two *SCCmec* typing methods employed, revealed the presence of an uncharacterized *SCCmec* element MRSA strains. Using the first two multiplex PCRs of Kondo *et al.* (2007), we found that these MRSA carry the *ccr* type 5 and the *mec* class A. So far the combination of these two elements had only been observed in strains carrying simultaneously two *SCCmecIII* elements, a type III *SCCmec* and *SCCmercury* (Kondo et al., 2006, Chongtrakool et al. 2006). Recombination between different *SCCmec* types and/or local acquisition may explain the emergence of a new resistance elements (Branger et al., 2003, Feil et al., 2003, Fitzgerald et al., 2001). Nevertheless, further investigations are needed to address this hypothesis and to characterize the new cassette from Nigeria. In Nigeria, *SCCmec* element I and IV have been reported in southwestern Nigeria (Adesida et al., 2005, Shittu et al., 2005, Ghredemedin et al., 2009). The presence of untypable *SCCmec* reaffirmed the possibility of several new *SCCmec* elements, that could be linked to local emergence of some different clones. However, recent data indicate that the local acquisition of *SCCmec* elements is a frequent phenomenon (Nübel et al., 2008), highlighting the need to compare the molecular epidemiology of both MSSA and MRSA.

Apart from the hospital environment, MRSA isolates have been detected in community setting termed as Community-associated methicillin-resistance *S.aureus* 9CAMRSA), and their prevalence is increasing worldwide. CAMRSA isolates can be identified by high susceptibility to variety of antimicrobial agent, urease positivity, PVL-positive and *SCCmec* type IV (Deurenberg and Stobberingh, 2008). Demographically, 4 of the 12 MRSA were recovered from outpatients, urease-positive and untypable *SCCmec*. Based on this pattern, these MRSA isolates cannot be classified as community-associated methicillin-resistant *S.aureus* isolates.

## CONCLUSION

In conclusion, MRSA prevalence level of 12.5% might be considered relatively high, when compared with similar level in other parts of Nigeria. However, the clinical implication of MRSA infections and its negative attendant effect like rapid disseminability within the hospital setting, and difficulty if patients management might prompt the need for urgent periodic surveillance of MRSA strains in our routine microbiological analysis of clinical specimens,

and establishment of effective and efficient infection control and prevention unit as early intervention measures.

## REFERENCES

- Adesida S, Boelen H, Babajide B, Kehinde A, Snijders S, van Leeuwen W, Coker A, Verburgh H, van Belkum A (2005). Major epidemic clones of *Staphylococcus aureus* in Nigeria. *Microbial. Drugs Resistance*. 11(2), 115-121.
- Ako-Nai AK, Laminkanra AB, and Onipede AO (1995). Incidence of pathogenic microorganism in clinical specimens from hospital in South-western Nigeria. *East Afr. Med. J.* 72, 436-441.
- Akpaka PE, Kisson S, Rutherford C, Swanston WH, Jayarath P (2007). Molecular epidemiology of methicillin-resistant *Staphylococcus aureus* isolates from regional hospital in Trinidad and Tobago. *Int. J. Infect. Dis.* 11: 544-548.
- Bell JM, Turnidge JD, SENTRY APAC Participants. (2002). High prevalence of oxacillin-resistant *Staphylococcus aureus* isolates from hospital patients in Asia-Pacific and South Africa; Results from SENTRY Antimicrobial Surveillance Program, 1998-1999. *Antimicrobial Agents and Chemotherapy*, 46: 879-881.
- Branger C, Gardye C, Galbert J, Deschamps C, Lambert N (2003). Genetic relatedness between methicillin-sensitive and methicillin-resistant *Staphylococcus aureus* strains from France and international sources; delineation of genomic groups. *J. Clin. Microbiol.* 41: 2946-2951.
- Chongtrakool P, Ito T, Ma XX, Kondo Y, Trakulsomboon S, Tiensasitorn C, Jamklang M, Chavalit T, Song JH, Hiramatsu K (2006). Staphylococcal cassette chromosome *mec*(SCC*mec*) typing of methicillin-resistant *Staphylococcus aureus* strains isolated in 11 Asian countries: a proposal for a new nomenclature for SCC*mec* elements. *Antimicrobial Agents and Chemotherapy*, 50: 1001-1012.
- Deurenberg RH, Stobberingh EE (2008). The evolution of *Staphylococcus aureus*. *Infection, Genetics and Evolution*, 8: 747-763.
- Enright MC, Robinson DA, Randle G, Feil EJ, Grundmann H, Spratt BG (2002). The evolutionary history of methicillin-resistant *Staphylococcus aureus*(MRSA). *Proceeding of National Academy of Science, U.S.A.* 99: 7687-7692.
- Fiebelkorn KR, Crawford SA, McElmeal MI, Jorgensen JH (2003). Practical disk diffusion method for detection of inducible clindamycin resistance in *Staphylococcus aureus* and coagulase-negative staphylococci. *Journal of Clinical Microbiology*, 41: 4740-4744
- Fitzgerald JR, Sturderant DE, Mackie SM, Gill SR, Musser JM (2001). Evolutionary genomic of *Staphylococcus aureus*; insight into the origin of methicillin-resistant strain and the toxic shock syndrome epidemic. *Proceeding. Of National. Academy of Science U.S.A.* 98: 8821-8826.
- Gadepalli R, Dhawan B, Mohanty S, Kapil A, Das BK, Chaudhry R (2006). Inducible clindamycin resistance in clinical isolates of *Staphylococcus aureus*. *Indian J Med Res.* 123:571-3.
- Ghebremedhim S, Olugbosi MO, Raji AM, Layer F, Bakare RA, Konig B, Konig W (2009). Emergence of community-associated methicillin-resistant *Staphylococcus aureus* with unique resistance profile in southwestern Nigeria. *Journal of Clinical Microbiology*, 49:2975-2980.
- Hartman BJ, Tomasz A (1984). Low-affinity penicillin-binding protein associated with beta-lactamase resistance in *Staphylococcus aureus*. *J. Bacteriol.*, 158: 513-516.
- Hiramatsu K, Cui L, Kuroda M, Ito T (2001). The emergence and evolution of methicillin-resistant *Staphylococcus aureus*. *Trends in Microbiology*, 9: 486-493
- Ito T, Katayama Y, Asada K, Mor N, Trutsumimoto K, Tiensasitorn C, Hiramatsu K (2001). Structural comparison of three type of staphylococcal cassette chromosome *mec* integrated on the chromosome of methicillin-resistant *Staphylococcus aureus*. *Antimicrobial Agents and Chemotherapy*, 45: 1323-1336.
- Kesah C, Redjeb SB, Odugbemi TO, Boye CSB, Dosso M, Ndinya Achola JO, Koulla-Shiro S, Benbadiri M, Rahal K, Borg M (2003). Prevalence of methicillin-resistant *Staphylococcus aureus* in eight African hospital and Malta. *Clinical Microbiology Infection*, 9: 153-156.
- Kesah CN, Ogunsola FT, Niemogba MT, Odugbemi T (1997). An in-vitro study of methicillin and other antimicrobial agents against *Staphylococcus aureus*, 1994-1996. *Nigerian Quarterly J. Hosp. Med.*, 7(3); 286-288.
- Kleven RN, Edwards JR, Tenover FC, McDonald LC, Huran T, Gaynes R (2007). Changes in the epidemiology of methicillin-resistant *Staphylococcus aureus* in intensive care unit in US hospitals, 1992-2003. *Clinical Infectious Diseases*, 42: 389-391
- Kondo Y, Ito T, Ma XX, Watanabe S, Kreiswirth BN, Etienne J, Hiramatsu K (2007). Combination of multiplex PCRs for staphylococcal cassette chromosome *mec* type assignment; rapid identification system for *mec*, *ccr* and major difference in junkyard region. *Antimicrobial Agents and Chemotherapy* 51:264-274.
- Lowy FD (1998). *Staphylococcus aureus* infections. *New England J. Med.*, 339: 520-532
- Ma XX, Ito T, Tiensasitorn C, Jamklang M, Chingtrakool P, Boyce-Vavra S, Daum RS, Hiramatsu, k (2002). Novel type of staphylococcal cassette chromosome *mec* identified in community-acquired methicillin-resistant *Staphylococcus aureus* strains. *Antimicrobial Agents and Chemotherapy*, 46: 1147-1152.
- Nübel U, Roumagnac P, Feldkamp M, Song J-H, Ko KS, Huang Y-C, Coombs G, Ip M, Westh H, Skov R, Struelens MJ, Goering RV, Strommenger B, Weller A, Witte W, Achtman M (2008). Frequent emergence and limited geographic dispersal of methicillin-resistant *Staphylococcus aureus*. *Proceedings of the National Academy of Science*, 105: 14130-14135
- Odugbemi TO, Hafiz S, McEntegart MG (1977). Penicillinase-producing *Nisseriagonorrhoeae*; Detection by starch paper technique. *British Med. J.* 2: 500-501.
- Oliveria DC, Milheririco C, de Lencastre H (2006). Redefining a structural variant of staphylococcal cassette chromosome *mec*, SCC*mec* type VI. *Antimicrobial Agents and Chemotherapy*, 50: 3457-9.
- Ontengo DC, Baltazar LA, Santiago RS, Matias RR, Issac CA, Tuazon AO (2004). Methicillin-resistant *Staphylococcus aureus* isolates from Filipino patients (1999-2003). *Philippines. J. Microb. Infect. Dis.*, 33(3), 105-110.
- Orrett FA, Land M (2006). Methicillin-resistant *Staphylococcus aureus* prevalence; current susceptibility pattern in Trinidad. *BMC Infectious Disease*, 6: 683-7.
- Panlilo AL, Culver DH, Gaynes RP, Banarjee S, Henderson TS, Tolson JS, Martone WJ (1992). Methicillin-resistant *Staphylococcus aureus* in U.S hospitals, 1975-1991. *Infection Control and Hospital Epidemiology*, 13: 582-586.
- Rotimi VO, Orebanjo OA, Banjo TO, Onyefefa PI, Nwobu RN (1987). Occurrence and antimicrobial susceptibility profiles of methicillin-resistant *Staphylococcus aureus* in Lagos University Teaching Hospital. *Central Afr. J. Med.* 33, 95-99.
- Saika L, Nath R, Choudhury B, Sarkar M (2009). Prevalence and antibiotic susceptibility pattern of methicillin-resistance *Staphylococcus aureus* in Assam. *Indian J. Critical Care Med.* 13(3):156-158
- Schmitz FJ, Mackenzie CR, Geisel R, Wagner S, Idel H, Verhoef I (1997). Methicillin-resistant *Staphylococcus aureus* strain in the greater Dusseldorf area. *European. J. Epidemiol.* 13:709-717.

Skov R, Smyth R, Clausen M, Larsen AR, Frimodt-Moller N, Olison-Liljequist B, Kahlmeter G (2003). Evaluation of a cefoxitin 30microgram disc in Iso-Sentest agar for detection of methicillin-resistant *Staphylococcus aureus*Journal of Antimicrobial Chemotherapy,52; 204-207.